

CITY PAYS:

MAIN LINE SEWER

HOMEOWNER PAYS:

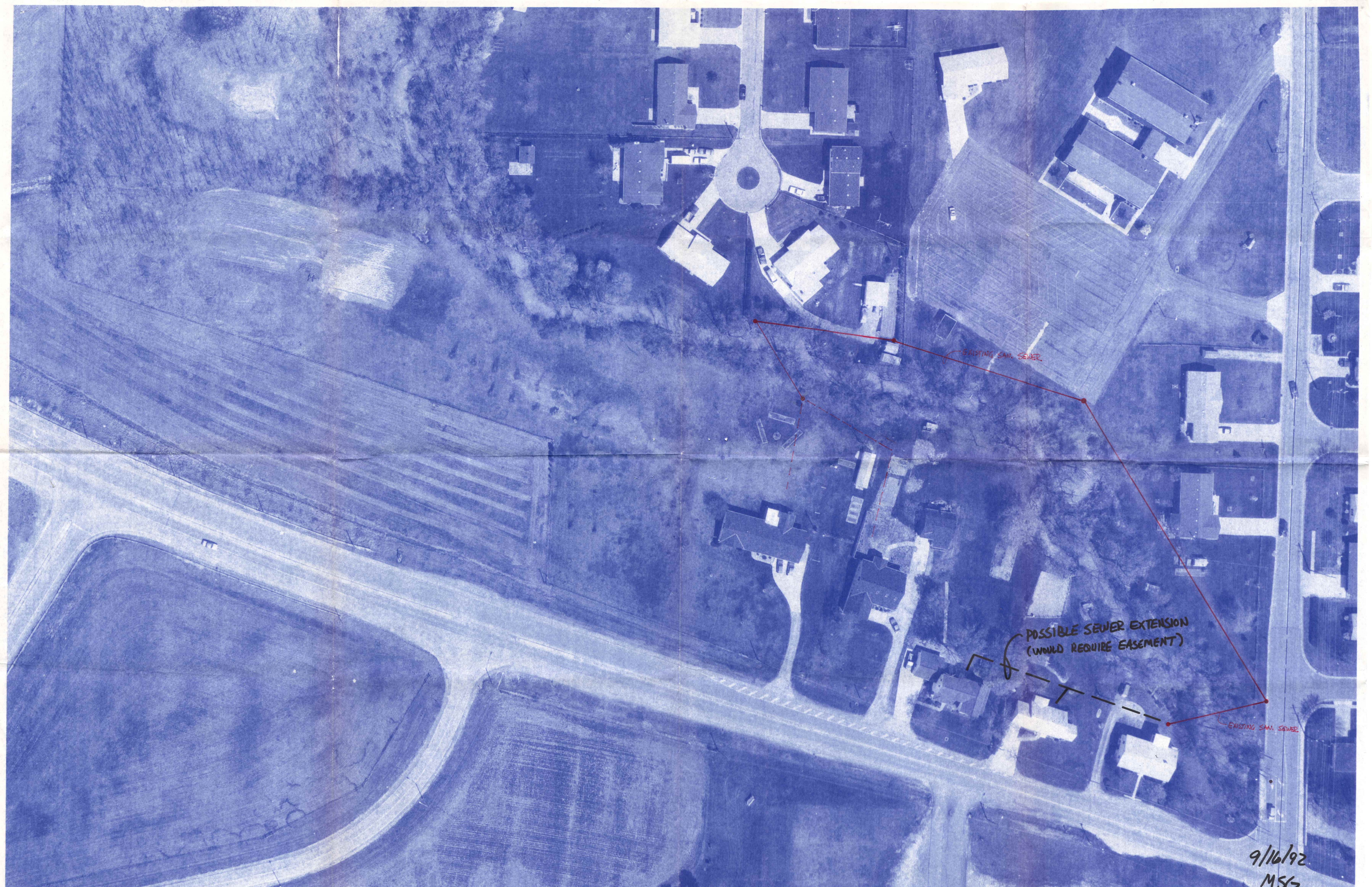
EASEMENT TO CITY FOR \$1.00

MAKE THEIR OWN CONNECTION

PAY TAP FEE

Chad got this information
from Jon B

1420 Woodlawn



EXISTING SAN. SEWER

POSSIBLE SEWER EXTENSION
(WOULD REQUIRE EASEMENT)

EXISTING SAN. SEWER

9/16/92
MSG